



www.kubuskazan.com.tr  
**Kubus**  
ısı cihazları

*"We continue to heat since 1948"*



INDUSTRIAL STEAM BOILERS

Turkey's production  
power in heating and industry





**3 PASS SCOTCH TYPE FULL CYLINDRICAL LIQUID-GAS FUEL STEAM BOILER**



**TECHNICAL SPECIFICATIONS**

- Our Steam Boilers are manufactured which are proper to TS377-TS EN12953, CE, ISO standards.
- EN 10216-1/2, EN 10217-1/2 boiler tube and EN 10028-2/3 special boiler sheet are used in our manufacturing process.
- To be able to run with liquid fuel and gas fuel.
- It is resistant to high pressure because of its full cylindrical(scotch) design.
- It is three pass and fire-smoke tube.
- Since the circulation inside the boiler is high, it is highly efficient and the flue gas temperature is very low.
- It can be manufactured between 0,5-16 bar.
- Thanks to the highly efficient combustion, the heat loss is almost non-existent, and the flue gas emission rates are low.
- It can be run fully-automatic, and there is no intervention need while the system is on.
- Easy to clean and maintain thanks to hand and man holes.
- Efficiency rates are 89-94%.
- There are three different safety systems.
- It has a high heating surface and large steam volume. In this way, it can produce high-energy dry steam.
- Our factory test pressure is at least 1.5-2 times the operating pressure.
- It provides more comfortable combustion with its low smoke path pressure value.
- Heat loss is minimum thanks to usage of high density insulation material.
- It can be dispatched as a package with its all accessories.
- Optionally it can be delivered on site and in a package with all its accessories.
- Can be manufactured with superheater and economizer option.
- It can be used in all industrial facilities that need steam.



#### TECHNICAL SPECIFICATIONS

- Our Steam Boilers are manufactured which are proper to TS377-TS EN12953, CE, ISO standards.
- EN 10216-1/2, EN 10217-1/2 boiler tube and EN 10028-2/3 special boiler sheet are used in our manufacturing process.
- To be able to run with liquid fuel and gas fuel.
- It is very easy to assemble and install.
- It occupies less space thanks to its package type.
- Thanks to its automatic control and easy use, it produces steam in a short time and reaches maximum efficiency.
- It produces as much steam as you need.
- Thanks to its special design, it is highly efficient and long-lasting.
- It can be manufactured between 0,5-16 bar.
- Thanks to the highly efficient combustion, the heat loss is almost non-existent, and the flue gas emission rates are low.
- It can be run fully-automatic, and there is no intervention need while the system is on.
- It is easy to clean and maintain compared to other boilers.
- Efficiency rates are 89-94%.
- Heat loss is minimum thanks to usage of high density insulation material.
- It can be dispatched as a package with its all accessories.
- Optionally it can be delivered on site and in a package with all its accessories.
- It can reach higher efficiencies with the integrated economizer.
- It can be used in all industrial facilities that need steam.



**3 PASS SCOTCH TYPE FULL CYLINDRICAL AUTOMATIC INSTALL STEAM BOILER**



**TECHNICAL SPECIFICATIONS**

- Our Steam Boilers are manufactured which are proper to TS377-TS EN12953, CE, ISO standards.
- EN 10216-1/2, EN 10217-1/2 boiler tube and EN 10028-2/3 special boiler sheet are used in our manufacturing process.
- It provides high efficiency burning of solid fuels (nuts, coal, pellets, sawdust, etc.).
- It is resistant to high pressure because of its full cylindrical(scotch) design.
- It is three pass and fire-smoke tube.
- Since the circulation inside the boiler is high, it is highly efficient and the flue gas temperature is very low.
- It can be manufactured between 0,5-16 bar.
- Thanks to the highly efficient combustion, the heat loss is almost non-existent, and the flue gas emission rates are low.
- It can be run fully-automatic, and there is no intervention need while the system is on.
- As a result of homogeneous fuel feeding and keeping the temperature constant thanks to the stoker combustion system; non-fluctuating, consistent, constant pressure, uninterrupted steam can be obtained.
- Easy to clean and maintain thanks to hand and man holes.
- Efficiency rates are 85%.
- There are three different safety systems.
- It has a high heating surface and large steam volume. In this way, it can produce high-energy dry steam.
- Our factory test pressure is at least 1.5-2 times the operating pressure.
- It provides more comfortable combustion with its low smoke path pressure value.
- Heat loss is minimum thanks to usage of high density insulation material.
- It can be dispatched as a package with its all accessories.
- Optionally it can be delivered on site and in a package with all its accessories.
- It can be used in all industrial facilities that need steam.



#### TECHNICAL SPECIFICATIONS

- Our Steam Boilers are manufactured which are proper to TS377-TS EN12953, CE, ISO standards.
- EN 10216-1/2, EN 10217-1/2 boiler tube and EN 10028-2/3 special boiler sheet are used in our manufacturing process.
- It is resistant to high pressure because of its full cylindrical(scotch) design.
- It is three pass and fire-smoke tube.
- Since the circulation inside the boiler is high, it is highly efficient and the flue gas temperature is very low.
- It can be manufactured between 0,5-16 bar.
- Thanks to the highly efficient combustion, the heat loss is almost non-existent, and the flue gas emission rates are low.
- Easy to clean and maintain thanks to hand and man holes.
- Efficiency rates are 85%.
- There are three different safety systems.
- It has a high heating surface and large steam volume. In this way, it can produce high-energy dry steam.
- Our factory test pressure is at least 1.5-2 times the operating pressure.
- It provides more comfortable combustion with its low smoke path pressure value.
- Heat loss is minimum thanks to usage of high density insulation material.
- It can be dispatched as a package with its all accessories.
- Optionally it can be delivered on site and in a package with all its accessories.





#### TECHNICAL SPECIFICATIONS

- Our Steam Boilers are manufactured which are proper to TS377-TS EN12953, CE, ISO standards.
- EN 10216-1/2, EN 10217-1/2 boiler tube and EN 10028-2/3 special boiler sheet are used in our manufacturing process.
- It provides high efficiency burning of solid fuels (nuts, coal, pellets, sawdust, etc.).
- It can be manufactured as tube expander or welded.
- It is three pass and fire-smoke tube.
- Since the circulation inside the boiler is high, it is highly efficient and the flue gas temperature is very low.
- It can be produced as low and high pressure.
- Thanks to the highly efficient combustion, the heat loss is almost non-existent, and the flue gas emission rates are low.
- It can be run fully-automatic, and there is no intervention need while the system is on.
- As a result of homogeneous fuel feeding and keeping the temperature constant thanks to the stoker combustion system; non-fluctuating, consistent, constant pressure, uninterrupted steam can be obtained.
- Efficiency rates are 85%.
- There are three different safety systems.
- It has a high heating surface and large steam volume. In this way, it can produce high-energy dry steam.
- Our factory test pressure is at least 1.5-2 times the operating pressure.
- It provides more comfortable combustion with its low smoke path pressure value.
- Heat loss is minimum thanks to usage of high density insulation material.
- It can be dispatched as a package with its all accessories.
- Optionally it can be delivered on site and in a package with all its accessories.
- If desired, the combustion pot can be manufactured as chrome casting.



#### TECHNICAL SPECIFICATIONS

- Our Steam Boilers are manufactured which are proper to TS377-TS EN12953, CE, ISO standards.
- EN 10216-1/2, EN 10217-1/2 boiler tube and EN 10028-2/3 special boiler sheet are used in our manufacturing process.
- Our boiler is naturally drafted, and a fan can be installed whenever desired.
- It can be manufactured as tube expander or welded.
- Our boilers are part type cast iron grates. It is sufficient to replace only the worn part.
- It is three pass and fire-smoke tube.
- Since the circulation inside the boiler is high, it is highly efficient and the flue gas temperature is very low.
- It can be produced as low and high pressure.
- Thanks to the highly efficient combustion, the heat loss is almost non-existent, and the flue gas emission rates are low.
- Efficiency rates are 85%.
- There are three different safety systems.
- It has a high heating surface and large steam volume. In this way, it can produce high-energy dry steam.
- Our factory test pressure is at least 1.5-2 times the operating pressure.
- It provides more comfortable combustion with its low smoke path pressure value.
- Heat loss is minimum thanks to usage of high density insulation material.
- It can be dispatched as a package with its all accessories.
- Optionally it can be delivered on site and in a package with all its accessories.
- It can be used in all industrial facilities that need steam.





#### TECHNICAL SPECIFICATIONS

- Heating systems installed with our hot air boiler; It is used in factories, hangars, greenhouses, mosques, poultry farms, gyms and similar places.
- Without the need for an expensive investment, hot air is produced directly at the desired temperature and amount in a very serial manner.
- It is very safe as there is no hot water and steam in the heating system.
- The biggest advantage of the automatic loading system is that it can burn hazelnut coal, pomace and hazelnut shell, which is cheap and easy to find.
- Since the fuel supply of the boiler is automatic from the bottom, it provides the best combustion and minimizes the formation of smoke.
- Since the reducer and air fan work together with the boiler thermostat in the automatic loading hot air boiler, the system automatically stops when the desired temperature is reached..
- Since the boiler insulation is made with rock wool, heat loss is at the lowest level. The combustion chamber of the boiler is designed as a half cylinder and it is possible to spread the heat in a healthy way and to economize. Considering the maximum temperature that will occur, qualified and thick material has been used.
- It has CE certificate, and produced in our ISO 9001-2015 certified production facilities. It is guaranteed for two years.
- Gazmer approval is available for Liquid-Gas fuel boilers.
- Liquid-Gas fuel boilers are with 92% efficiency.



# Kubus Kazan

## YK SERIES

### HOT OIL BOILERS



#### TECHNICAL SPECIFICATIONS

- Hot oil is obtained at high temperatures.
- It is designed in such a way that there will no liquid volume inside the hot oil boilers.
- Heating surface is manufactured as nested spiral seamless steel boiler tubes conforming standards of DIN 4754.
- Thanks to its special design, it enables user to intervene in case of.
- Maintenance is very easy.
- In atmospheric pressure, hot oil is obtained to 300°C.
- In the system, necessary precautions are taken by integrating control and automation equipments (flow, pressure and temperature control).
- There is no need of conditioning for thermic oil.
- It can be used in many branches of industry where high temperatures and heat transfer systems are needed at these temperatures.
- Optionally it can be delivered on site and in a package with all its accessories.



#### TECHNICAL SPECIFICATIONS

- In order to obtain hot water from steam or superheated water, the counter-current body is made of FE37 material and the copper pipe is at least 1 mm. thick serpentine.
- In order to remove the serpentine, there is a mirror compressed with a bolt and gasket between the two ring flanges.
- Control and safety devices and filling and draining cock holes are available.
- One or two feet of appropriate construction at the required height are fixed on the base made of 250-dose concrete with appropriate studs.
- The outer part is insulated with a stone wool mattress (chlorine content < 100 ppm) sewn to a 5 cm thick rabbit wire with a density of 90 kg/m<sup>3</sup>.
- A liner is made with at least 0.5 mm thick galvanized sheet on top of the insulation.
- Non-galvanized parts are painted with 2 layers of non-combustible paint, and are supplied and assembled in the workplace. (The outer diameter is taken as basis in the calculation of the heating area.)
- 10% more price is applied, provided that the required evaporation area and the necessary steam drum are included for the steam exchanger with the same quality and at 4 atmospheres and lower pressure in the serpentine area.
- If it desired, can be produced in the shape of U type or ect.





#### TECHNICAL SPECIFICATIONS

##### Condensing economiser with smoke tube;

- It is fire-smoke tube, and produced from stainless steel.
- The economiser installed at the boiler chimney outlet increases the boiler efficiency up to 10% by giving the heat to be thrown into the nature to the boiler heating water.
- Boiler chimney connection and economiser installment connection is so easy.
- It is highly resistant and long-lasting against corrosion in condensation water that may occur in the economiser.
- It is designed to evacuate the condensation water easily.
- Our economisers can easily be used in our boilers which fire gas fuel, and beside it, since the return water in steam boilers is preheated by the economizer, it increases the boiler safety.
- In the situation of the present boiler
- In case the current boiler is insufficient, your investment amount can be minimized thanks to the use of economiser from the additional boiler investment, if your additional capacity requirement is not high.
- Your hot flue gas which thrown into nature cannot heat the atmosphere, but it heats your living space and your pocket by heating your boiler water.

##### Condensing economiser with water tube;

- Our products are prepared in a detailed way to obtain high energy save.
- Tubes which are used in our products are imported 316 quality, and stainless steel.
- Thanks to the 316 quality stainless steel winding on our imported pipes, it provides high performance, maximum efficiency and durability for many years.
- Thanks to the 316 stainless steel sheet of the body it provides excellent resistance to condensation water.
- It provides minimum heat loss thanks to the insulation rock wool.
- It can be installed easily.
- Installation elements are easy to assemble and have a nice appearance with electrostatic powder oven paint.

# Kubus Kazan

## KT SERIES

### CONDENSATE TANK



#### TECHNICAL SPECIFICATIONS

- Present system or new steam system which will install are assembled around condensate circuit.
- It can be installed in existing facilities without disturbing the existing system.
- Because the condensate circuit is kept under pressure, it does not allow flash steam formation.
- Since flash steam is not formed, the energy escaping into the air with flash steam is recovered in the system.
- Since there is no flash steam loss, it is not necessary to constantly pump additional feed water into the system.
- Because the need for additional feed water is limited to leaks, feedwater softening costs do not occur.
- Since there is no additional feed water usage, the cost of using boiler chemicals is eliminated.
- Since the system water quality is not deteriorated, the boiler is naturally protected against calcification.
- Since the feed water pumped into the boiler is close to the saturation temperature, thermal shocks do not occur in the boiler body and expensive solutions such as proportional feeding are not required.
- Since there is no fresh water inlet to the boiler, there is no need for bottom and surface blowdown.
- The water and energy lost by bottom and surface blowdown are recovered.
- Since the pump suction pressure is high, the energy consumption of the boiler feed pump decreases.



# Kubus Kazan

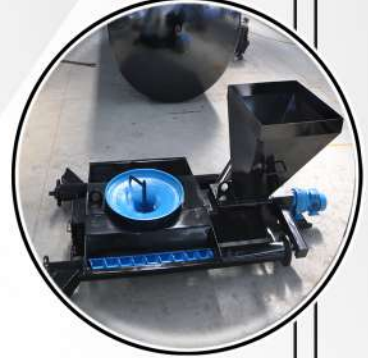
## DT SERIES

### DEGASSING TANK



#### TECHNICAL SPECIFICATIONS

- It is installed in the feed water circuit of the existing or newly installed steam system.
- The degassing pump is automatically switched on and off according to the deaerator water level control.
- It automatically provides the steam inlet according to the degassing pressure and temperature.
- The system is designed for fully automatic operation.
- In the case of using a rotten steam heat exchanger, the gases discharged from the deaerator and the escaping steam heat are recovered and the feed water pumped into the deaerator is preheated. Thus, the operating cost of the deaerator is reduced.
- Degassing dome cascades are produced from AISI 316 stainless steel sheet.
- The body is painted with two layers of heat resistant boiler paint and insulated with rockwool.
- It is covered with colored galvanized sheet on the body, providing an elegant appearance.
- It is delivered ready for use when all hardware is mounted and connected to the installation.



#### TECHNICAL SPECIFICATIONS

- The biggest advantage of the automatic loading system is that it can burn hazelnut coal(5-25mm.), pomace and hazelnut shell, which is cheap and easy to find.
- The efficiency rate is %84. It has been tested in TSE heat laboratories and has received an efficiency test report as the highest level of 3\*\*\*.
- It burns the coal to the smallest particle. It minimizes combustion errors caused by combustor errors. Slag rate is reduced by 1/3.
- In the stoker system, the reducer and air fan work together with the boiler thermostat, and the system automatically stops when the boiler water reaches the desired temperature. In case of a decrease in the desired temperature, it is activated again, and as a fully automatic system, it works untouched throughout the winter by supplying coal without touching it.
- It is a unique opportunity in Steam Boilers, it puts an end to the random coal throwing into the boiler and provides absolute safety against explosions and collapses.
- Although 300-400 kg of coal is burned per hour in large facilities operating 24 hours a day, we have products that work for five years or more.
- The stoker side should be specified in boilers.





### TECHNICAL SPECIFICATIONS

- It covers minimum space thanks to its special design.
- It provides maximum cleaning by keeping the soot in the flue gas with specially designed coil springs inside.
- Easy to clean and maintenance.
- Easy to install thanks to its special design.
- It works comfortable, and the pressure against the flue gas is almost non-existent.
- Thanks to the size of the soot holding chamber, it provides the opportunity to empty it late.
- It has low cost.
- It is wear resistant and long lasting.
- It provides maximum efficiency.

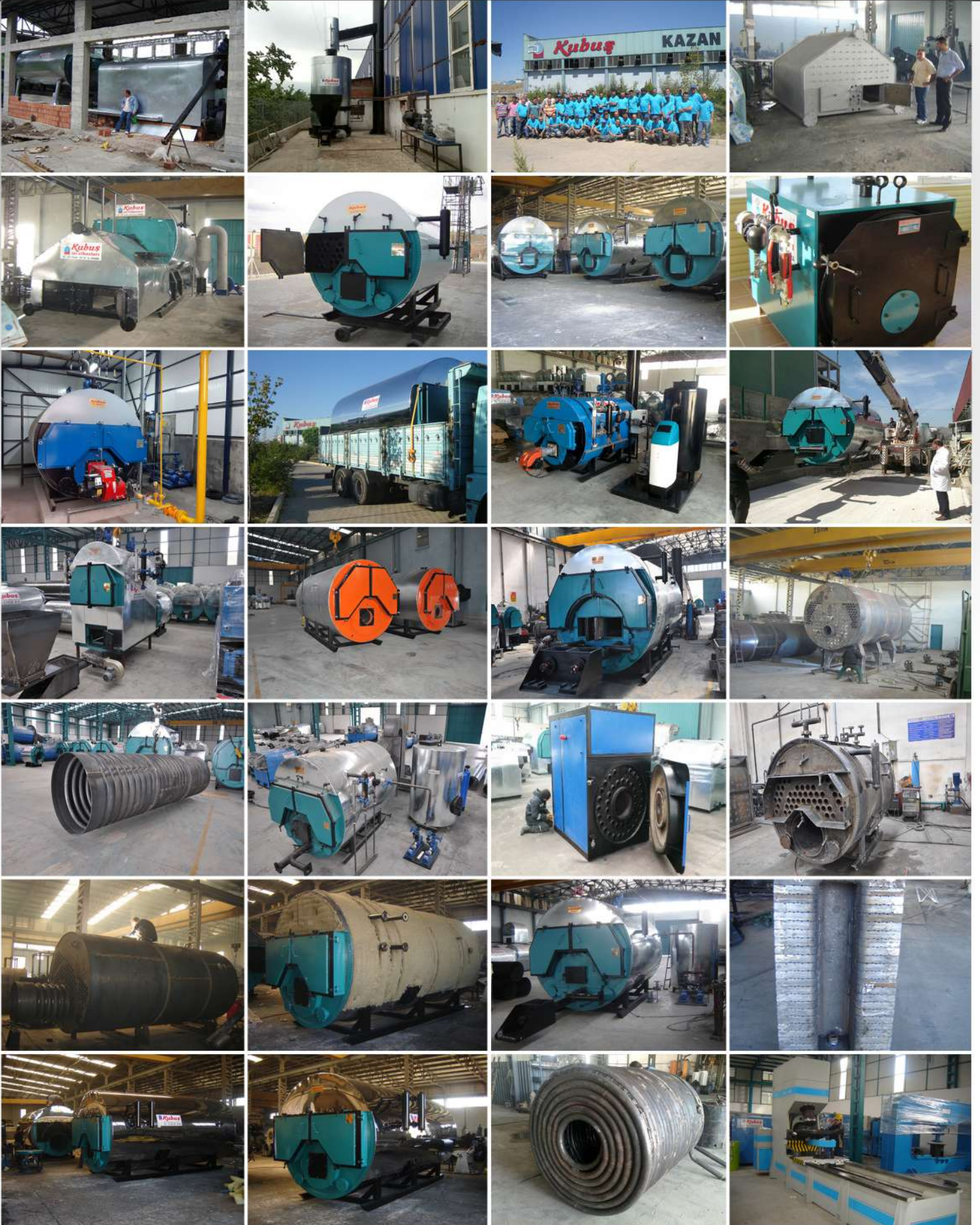






# Kubuş Kazan

## PHOTOS





### FİRMALAR

TRAKYA ISI/EATON  
KIZILAY ERZİNCAN  
ERHAS  
ALANGA BOILER  
ACAN MAKİNA  
ACAN MAKİNA  
ASDAS ASFALT  
KLİTERM  
MARJİNAL PROJE  
AREN GRUP  
DERMAN SÜT  
KAYDAŞ GIDA  
ÇAĞDAŞ TEKSTİL  
TÜM İSİ  
ÇAĞDAŞ PERTEK SÜT  
ÖZADA SÜT  
ÖZYILDIZ  
YILMAZ GRUP  
MESA BRÜLÖR  
ARKAN FATHİL  
MUHANNED YASSEN  
BALPOR  
SA-SU  
AL-HA DIŞ TİCARET  
MELİH SUCUK  
HALİL İBRAHİM DOĞAN  
ALTILAR  
EMİRHAN DİRLİK  
TEMSAN  
NURO İNŞAAT  
MESA BRÜLÖR  
SASU  
END ELEKTRİK  
KÜPEÇİK PEYNİR  
DMO İNŞAAT  
BUKAY MÜHENDİSLİK  
SERENAY İNŞAAT  
TEMSAN  
AZİM MAKİNA  
BİLMAK KALIP  
ŞAHİN OTOMASYON  
İMTE KAZAN  
ÜNAL İSİ  
YEMSA  
İLSA BETON  
BUKAY MÜHENDİSLİK  
ALAPALA YEM  
ENDÜSTRİYEL ELEKTRİK  
SPİKA  
TEMSAN  
KORPAŞ  
MESA BRÜLÖR  
BAŞTAŞ ÇİMENTO  
ŞAHİN OTOMASYON  
MALAVİ  
SPİKA  
SAVAŞ ODUNCU  
NU-RO İNŞAAT  
SEPETÇİOĞLU PEYN.  
SEZGÜL MÜHENDİSLİK  
MADALYON HALI  
ANILSAN HAVLU  
ANKARA YEM FAB.  
ÇUBUK UN YEM  
İMTE KAZAN  
DELİCE KEMİK FAB.  
GÜLAK MAKİNA

### ÜRÜN VE KAPASİTELERİ

10.000 KG/H - 500 KG/H 45 BAR SIVI-GAZ YAKITLI BUHAR KAZANI  
165 M2 - 7000 KG/H SIVI-GAZ YAKITLI BUHAR KAZANI  
125 M2 STOKERLİ KATI YAKITLI BUHAR KAZANI  
4000 KG/H SIVI-GAZ YAKITLI BUHAR KAZANI  
150 M2 STOKERLİ KATI YAKITLI BUHAR KAZANI  
40 M2 STOKERLİ KATI YAKITLI BUHAR KAZANI  
60 M2 SIVI-GAZ YAKITLI BUHAR KAZANI  
70 M2 SIVI-GAZ YAKITLI BUHAR KAZANI  
45 M2 SIVI-GAZ YAKITLI BUHAR KAZANI  
70 M2 STOKERLİ KATI YAKITLI BUHAR KAZANI  
70 M2 STOKERLİ KATI YAKITLI BUHAR KAZANI  
80 M2 STOKERLİ KATI YAKITLI BUHAR KAZANI  
125 M2 SIVI-GAZ YAKITLI BUHAR KAZANI  
70 M2 SIVI-GAZ YAKITLI BUHAR KAZANI  
80 M2 STOKERLİ KATI YAKITLI BUHAR KAZANI  
40 M2 MANUEL YÜKLEME KATI YAKITLI BUHAR KAZANI  
100 M2 SIVI-GAZ YAKITLI BUHAR KAZANI  
45 M2 SIVI-GAZ YAKITLI BUHAR KAZANI  
70 M2 SIVI-GAZ YAKITLI BUHAR KAZANI  
55 M2 SIVI-GAZ YAKITLI BUHAR KAZANI  
110M2-170M2 - 100M2 - 80M2 SIVI-GAZ YAKITLI BUHAR KAZANI  
100 M2 STOKERLİ KATI YAKITLI BUHAR KAZANI  
4.000 KG/H SIVI-GAZ YAKITLI BUHAR KAZANI  
60 M2 STOKERLİ KATI YAKITLI BUHAR KAZANI  
60 M2 STOKERLİ KATI YAKITLI BUHAR KAZANI  
3.000 KG/H SIVI-GAZ YAKITLI BUHAR KAZANI  
100 M2 STOKERLİ KATI YAKITLI BUHAR KAZANI  
100 M2 STOKERLİ KATI YAKITLI BUHAR KAZANI  
2.000 KG/H SIVI-GAZ YAKITLI BUHAR KAZANI  
3.000 KG/H SIVI-GAZ YAKITLI BUHAR KAZANI  
2.000 KG/H SIVI-GAZ YAKITLI BUHAR KAZANI  
200 M2 ÇİFT STOKERLİ KATI YAKITLI BUHAR KAZANI  
2.000 KG/H SIVI-GAZ YAKITLI BUHAR KAZANI  
1.250 KG/H SIVI-GAZ YAKITLI BUHAR KAZANI  
50 M2 STOKERLİ KATI YAKITLI BUHAR KAZANI  
3.000 KG/H SIVI-GAZ YAKITLI BUHAR KAZANI  
6.000 KG/H SIVI-GAZ YAKITLI BUHAR KAZANI  
3.000 KG/H SIVI-GAZ YAKITLI BUHAR KAZANI  
3.125 KG/H SIVI-GAZ YAKITLI BUHAR KAZANI  
1.500 KG/H SIVI-GAZ YAKITLI BUHAR KAZANI  
50 M2 STOKERLİ KATI YAKITLI BUHAR KAZANI  
50 M2 STOKERLİ KATI YAKITLI BUHAR KAZANI  
1.000 KG/H SIVI-GAZ YAKITLI BUHAR KAZANI  
1.250 KG/H SIVI-GAZ YAKITLI BUHAR KAZANI  
75 M2 STOKERLİ KATI YAKITLI BUHAR KAZANI  
40 M2 STOKERLİ KATI YAKITLI BUHAR KAZANI  
50 M2 STOKERLİ KATI YAKITLI BUHAR KAZANI  
85 M2 STOKERLİ KATI YAKITLI BUHAR KAZANI  
3.000 KG/H SIVI-GAZ YAKITLI BUHAR KAZANI  
2.000 KG/H SIVI-GAZ YAKITLI BUHAR KAZANI  
100 M2 STOKERLİ KATI YAKITLI BUHAR KAZANI  
1250 KG/H SIVI-GAZ YAKITLI BUHAR KAZANI  
3.000 KG/H SIVI-GAZ YAKITLI BUHAR KAZANI  
50 M2 STOKERLİ KATI YAKITLI BUHAR KAZANI  
5.000 KG/H SIVI-GAZ YAKITLI BUHAR KAZANI  
2.000 KG/H SIVI-GAZ YAKITLI BUHAR KAZANI  
5.000 KG/H SIVI-GAZ YAKITLI BUHAR KAZANI  
5.000 KG/H SIVI-GAZ YAKITLI BUHAR KAZANI  
100 M2 STOKERLİ KATI YAKITLI BUHAR KAZANI  
4.000 KG/H SIVI-GAZ YAKITLI BUHAR KAZANI  
125 M2 STOKERLİ KATI YAKITLI BUHAR KAZANI  
100 M2 VE 150 M2 GAZ YAKITLI BUHAR KAZANI  
100 M2 SIVI-GAZ YAKITLI BUHAR KAZANI  
100 M2 SIVI-GAZ YAKITLI BUHAR KAZANI  
125 M2 SIVI-GAZ YAKITLI BUHAR KAZANI  
250 M2 STOKERLİ KATI YAKITLI BUHAR KAZANI  
4000 KG/H SIVI-GAZ YAKITLI BUHAR KAZANI

### ŞEHİR

TEKİRDAĞ  
ERZİNCAN  
ERZURUM  
ÖZBEKİSTAN  
KAZAKİSTAN  
TEKİRDAĞ  
ANKARA  
İZMİR  
İSTANBUL  
ANKARA  
ADAPAZARI  
SİVAS  
BURSA  
UŞAK  
TUNCELİ  
MERSİN  
ANKARA  
ANKARA  
KONYA  
IRAK  
IRAK  
ANKARA  
ADANA  
CEZAYİR  
KIRIKKALE  
ISPARTA  
SİNOP  
NEVŞEHİR  
ADANA  
DİYARBAKIR  
KONYA  
ADANA  
KAZAKİSTAN  
KIRIKKALE  
MUĞLA  
VAN  
GÖKÇEADA  
ADANA  
TEKİRDAĞ  
MANİSA  
BALIKESİR  
İZMİR  
KONYA  
KONYA  
VAN  
VAN  
ÇORUM  
KONYA  
GÜRCİSTAN  
ADANA  
AFYON  
KONYA  
ANKARA  
BALIKESİR  
AFRİKA  
GÜRCİSTAN  
AZERBAJAN  
DİYARBAKIR  
KASTAMONU  
TUZLA HARP  
UŞAK  
BURSA  
ANKARA  
KİRŞEHİR  
İZMİR  
KIRIKKALE  
DİYARBAKIR



Our company was established in 1948 by Mustafa KUBUŞ under the name of "Heating Equipment Manufacturing". Our founder who had been working on plumbers, was inspired by installation structures of boilers imported from abroad and began to manufacture at a small shop in Ulus, Ankara as leading the way in this sector...

With successful manufacturing experience and beginning to produce other heating equipments, demand in this sector has been fulfilled at best up to now. Mustafa KUBUŞ, who took orders from all over Turkey, has continued its activities by incorporating under the frame of "KUBUŞ HEATING EQUIPMENTS" in 1970.

In 1996, our company was incorporated under the name of YANAR KAZAN MAK. İNŞ. TAAH. İML. SAN. TİC. LTD. ŞTİ. and has been continuing its manufacturing of wide product range festively with its registered brand of "KUBUŞ HEATING EQUIPMENTS and KUBUŞ BOILERS".

In 2004, our company established as a new and modern factory at KIRIKKALE INDUSTRIAL ZONE on 16.000 square meters with 3180 m2 closed area and keep on rising. Between 2008-2012, 7.200 m2 additional closed area was built and now we have 10.000 m2 closed area for production. Our company continues to serve TURKISH INDUSTRY with 85 personnel and 10.000 m2 closed area.

Our company presents quality by ISO:9001, TSE and CE certificates under the main titles of Natural Gas Boilers, Steam Boilers, High Efficient Heat Boilers, Boiler, Air Pressure Tank, Tank and General Heating Equipment that were firstly used in construction sector. Nearly in all cities of Turkey, we have dealerships. We take compliments and appreciation from all customers in our portfolio. Our company also continues to exports fastly and we would like you to know that we are waiting to give service to you with our high manufacturing capacity, wide machine-equipment park and professional personnel.



## Our business is steam since 1948.





3 Pass Liquid and Gas Fuel Fired Hot Water Boiler



3 Pass Fuel Cylindrical Solid Fuel Fired Hot Water Boiler



3 Pass Automatic Loading Fuel Cylindrical Solid Fuel Fired Hot Water Boiler



3 Pass Skotch Full Cylindrical Gas-Liquid Fuel Fired Steam Boiler



2 Pass Backpressure Liquid and Gas Fuel Fired Hot Water Boiler



3 Pass Semi Cylindrical Solid Fuel Fired Hot Water Boiler



3 Pass Automatic Loading Semi Cylindrical Solid Fuel Fired Hot Water Boiler



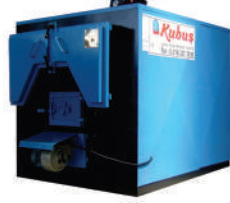
3 Pass Skotch Full Cylindrical Solid Fuel Fired Steam Boiler



3 Pass Gas Fuel Fired Condensing Hot Water Boiler



3 Pass Prismatic Solid Fuel Fired Hot Water Boiler



4 Pass Automatic Loading Prismatic Solid Fuel Fired Hot Water Boiler



3 Pass Semi Cylindrical Solid Fuel Fired Steam Boiler



3 Pass Skotch Tip Liquid and Gas Fuel Fired Hot Water Boiler



3 Pass Prismatic Eco Solid Fuel Fired Hot Water Boiler



3 Pass Automatic Loading Prismatic Solid Fuel Fired Hot Water Boiler



Steam Generator



Stainless Economiser



Water-Air-Fuel Tank



Solid - Liquid - Gas Fuel Hot Air Boiler



Hot Oil Boilers



**YANAR KAZAN MAKİNE İNŞAAT TAAHHÜT İMALAT SANAYİ VE TİC. LTD. ŞTİ.**

Merkez/Fabrika: Kızılırmak cad. no: 4 Organize Sanayi Bölgesi Yahşihan 71450 Kırıkkale - TÜRKİYE  
Tel: +90(318) 321 30 90 (pbx) Fax: +90(318) 321 31 98 Gsm: 0532 395 95 34 e-mail: info@kubuskazan.com.tr  
Ankara Ofis: Abdulkadir Geylani Cd. Fatih İş Merkezi No: 36 Ostim - Yenimahalle - Ankara - TÜRKİYE  
Tel: +90(312) 341 70 60 - 341 61 04 Fax: +90(312) 341 58 02